



Cable ID: S/FTP CAT5E 24AWG LSZH

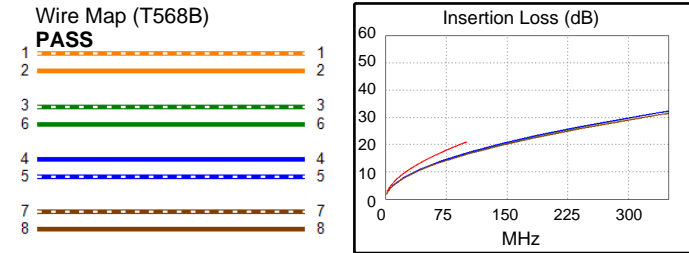
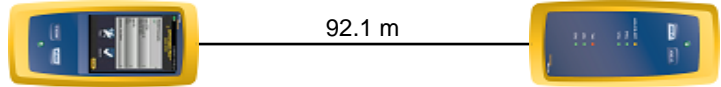
Test Limit: TIA Cat 5e Perm. Link
Limits Version: V7.8
Date / Time: 01/07/2026 10:44:07 AM
Headroom 10.6 dB (NEXT 4,5-7,8)
Cable Type: CAT5E S/FTP
NVP: 69.0%

Main: Versiv
S/N: 21200117
Software Version: V6.9 Build 2
Calibration Date: 02/01/2025
Adapter: DSX-5000 (DSX-PLA004)
S/N: 21331545

Test Summary: PASS

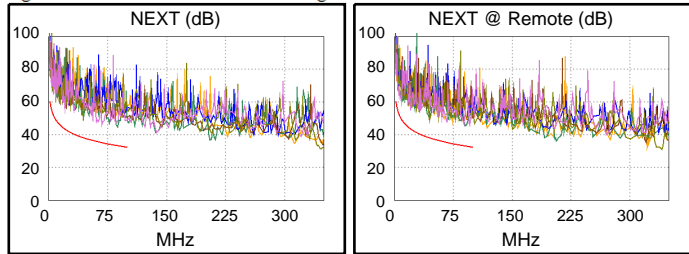
Remote: Versiv
S/N: 21200257
Software Version: V6.9 Build 2
Calibration Date: 02/01/2025
Adapter: DSX-5000R (DSX-PLA004)
S/N: 21331546

Length (m), Limit 90.0	[Pair 7,8]	92.1
Prop. Delay (ns), Limit 498	[Pair 4,5]	475
Delay Skew (ns), Limit 44	[Pair 4,5]	30
Resistance (ohms)	[Pair 4,5]	16.02
Insertion Loss Margin (dB)	[Pair 4,5]	4.1
Frequency (MHz)	[Pair 4,5]	100.0
Limit (dB)	[Pair 4,5]	21.0

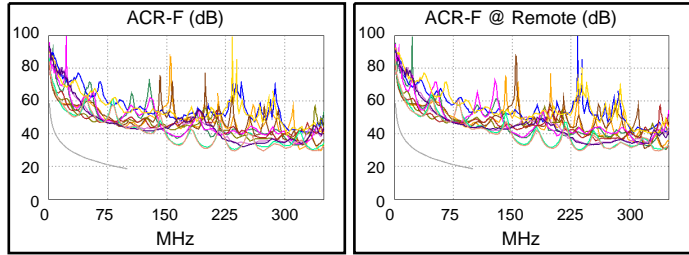


Worst Case Margin Worst Case Value

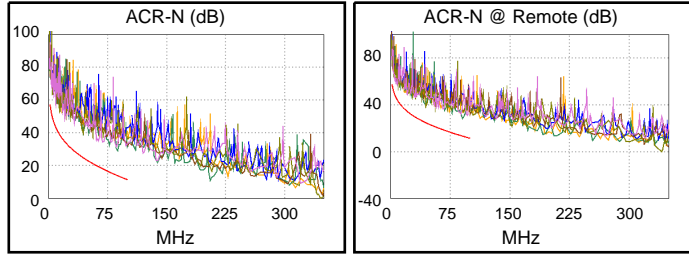
PASS	MAIN	SR	MAIN	SR
Worst Pair	1,2-4,5	4,5-7,8	1,2-4,5	1,2-4,5
NEXT (dB)	11.0	10.6	11.0	11.0
Freq. (MHz)	87.5	6.0	87.5	91.0
Limit (dB)	33.3	52.0	33.3	33.0
Worst Pair	4,5	4,5	4,5	1,2
PS NEXT (dB)	12.4	12.7	12.4	12.9
Freq. (MHz)	87.3	8.5	87.3	91.0
Limit (dB)	30.3	46.6	30.3	30.0



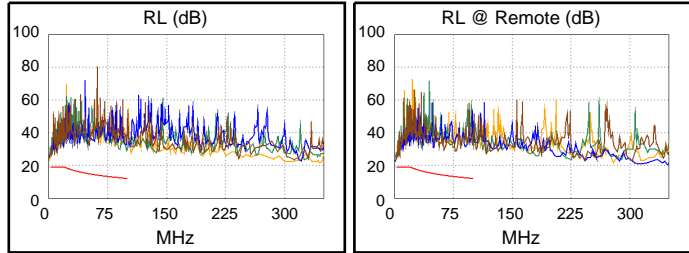
PASS	MAIN	SR	MAIN	SR
Worst Pair	7,8-4,5	4,5-7,8	7,8-4,5	7,8-4,5
ACR-F (dB)	21.5	21.8	24.6	24.2
Freq. (MHz)	30.0	30.0	100.0	100.0
Limit (dB)	29.1	29.1	18.6	18.6
Worst Pair	4,5	3,6	3,6	3,6
PS ACR-F (dB)	22.3	22.7	24.3	24.0
Freq. (MHz)	33.3	1.0	97.0	93.8
Limit (dB)	25.2	55.6	15.9	16.2



N/A	MAIN	SR	MAIN	SR
Worst Pair	3,6-7,8	4,5-7,8	1,2-4,5	1,2-4,5
ACR-N (dB)	13.5	11.5	14.7	14.8
Freq. (MHz)	4.4	6.0	87.5	91.0
Limit (dB)	50.1	47.2	13.8	13.1
Worst Pair	7,8	4,5	4,5	4,5
PS ACR-N (dB)	15.1	13.5	16.1	16.8
Freq. (MHz)	4.6	8.5	87.3	91.0
Limit (dB)	46.6	40.9	10.8	10.1



PASS	MAIN	SR	MAIN	SR
Worst Pair	1,2	4,5	1,2	4,5
RL (dB)	7.2	6.6	7.2	6.6
Freq. (MHz)	3.5	3.4	3.5	3.4
Limit (dB)	19.0	19.0	19.0	19.0



Compliant Network Standards:
 10BASE-T 100BASE-TX 100BASE-T4
 100BASE-T 2.5GBASE-T ATM-25
 ATM-51 ATM-155 100VG-AnyLan
 TR-4 TR-16 Active TR-16 Passive